

Only One

♩ = 96 D#m C# D#m 4xs D#m C# D#m

VERSES 1 & 2

1. I am on - ly one, but still I am one.
2. I am on - ly one, but still I am one,

3 C# D#m D#m C# D#m

I will not re-fuse to do what I can. I am on - ly one, but still I am one,
can-not do it all, but I can do some. I am on - ly one, but still I am one.

5 D#m C# D#m CHORUS D#m G#m7 C#7 F#

can-not do it all, but I can do some. On - ly one, I'm still one.
I will do the work un - til it is done.

7 B E#dim A#7 D#m D#m G#m7 C#7 F# B E#dim A#7

I will do all that I can. On - ly one, I'm still one. I will do all that I

10 D#m C# D#m D#m C# D#m D#m C# D#m D#m C# D#m

can.

14 D#m C# D#m

VERSES 3 & 4

3. Now we are to - ge - ther, now we are two.
4. With one oth - er now we are three,

15 C# D#m D#m C# D#m

Look at how much more we can do. Co - op - er - a - tion is the path to take.
build-ing a com - mu - ni - ty. Add one o - ther now we are four.

Words: John Sproule, b.1955 and Sheila White, b.1954

Music: Sheila White, b.1954

© 2021 Sheila White & John Sproule Sing Out Love
expiration July 2028

Arrangement Permissions

One-time Adaptation

New Arrangement OK

Seek permission to arrange

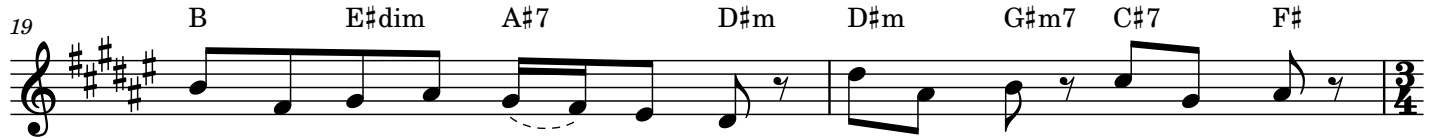
Look at the Sing Out Love "Permissions" section for further explanation

Only One - 2

CHORUS



See the kind of diff-rence it makes. On - ly two, we are two.
Each new one adds some - thing more. Some-thing more, some-thing more,

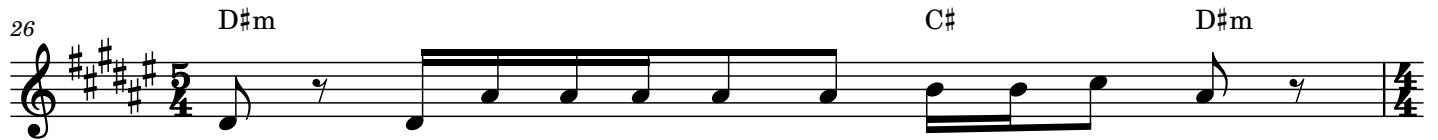


Look at how much more we can do. On - ly two, we are two.
each new one adds some - thing more. Some-thing more, some-thing more,

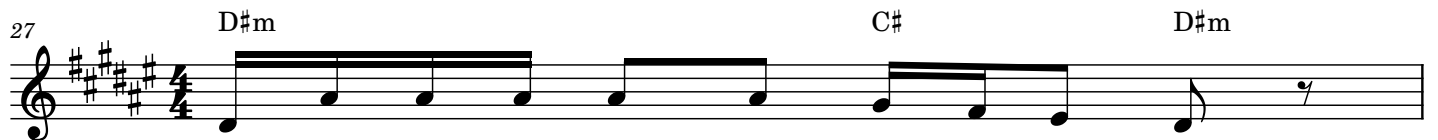


All it takes is me_ and you.
each new one adds some - thing__

2. END



more. I am on - ly one, but still I am one.



I will not re - fuse to do what I can.



I am on-ly one but still I am one, can-not do it all but I can do some.



I am on-ly one, but still I am one.